



*Welcome to*

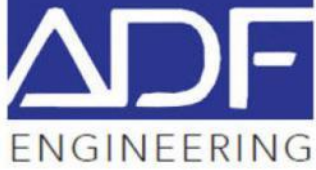
***ADCL – FAFECO Engineering Pvt. Ltd.***



# Who we are?

*Founding companies each have 40+ continuous years of delivering custom engineered solutions*

- Indo-Canadian Joint Venture OEM founded in January 2013
- ADVANCED DYNAMICS CORPORATION LIMITED, CANADA (1965)
- FAFECO, INDIA (1971)
- EQUIPMENTS & SYSTEMS
  - Assembly line handling systems
  - Sub assembly line handling systems
  - Transfer line automation
  - Lift ,lower & material feeding line automation
  - Cranes for various applications
  - Custom built Equipment's as per customer design



# Our ADF Family

**AREA: 85,000 Sft.**

**MANPOWER:150+35**



# Our Workshop at Pune

AREA: 85,000 Sq. ft.

Office: 27,000 Sq. ft.

MANPOWER:150+30



- Engg. & Production Office
- Weld Shop
- Painting Facility

- Sand Blasting facility
- Assembly Facility
- Testing Facility
- 150 + 30 Manpower

# ADCL Facilities

*ADCL owns its facilities which are located in St-Bruno, Quebec. These are dedicated to producing our own designs.*

- 45,000 sq. ft. MV facility
  - Engineering & Production offices
  - Weld shop
  - Machine shop
  - Painting facilities
  - Assembly facilities
  - Testing facility
  
- 35,000 sq. ft. Sagard facility
  - Service & Sales offices
  - Assembly facilities
  - Testing facility



**FAFECO**



*Vadodra Workshop*

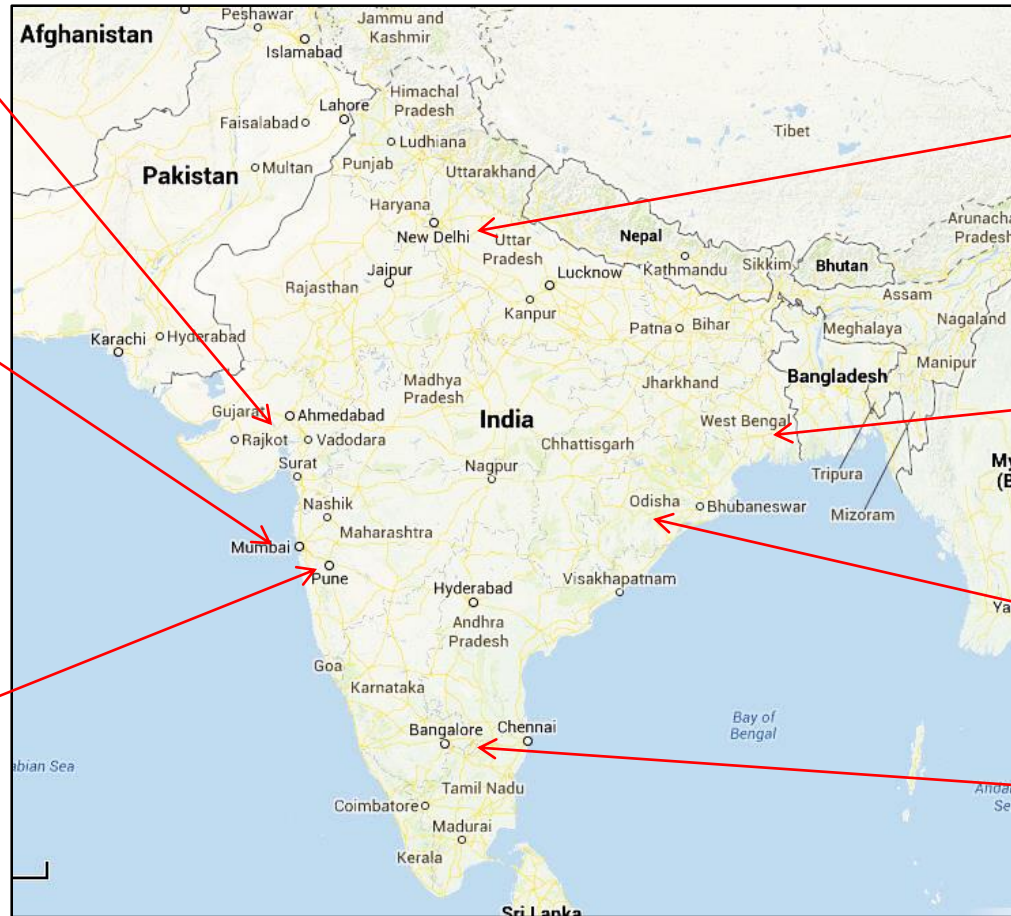
**FAFECO**



*Headquarters, Mumbai*



*Pune Workshop*



**FAFECO**

*Sales and Service, New Delhi*



**FAFECO**

*Sales and Service, Kolkata*

**FAFECO**

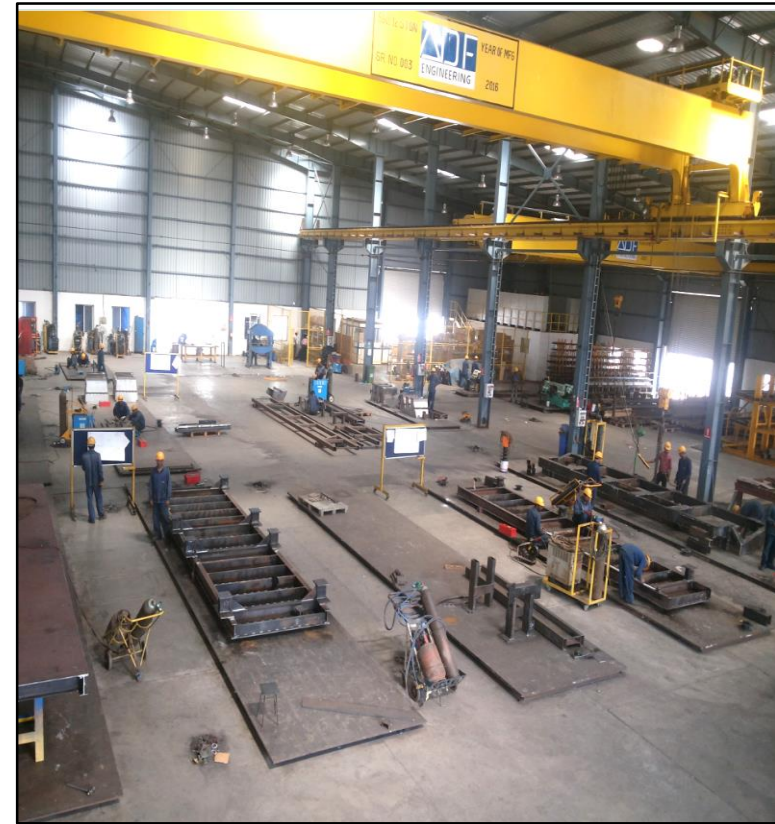
*Sales and Service, Bhubaneswar*

**FAFECO**

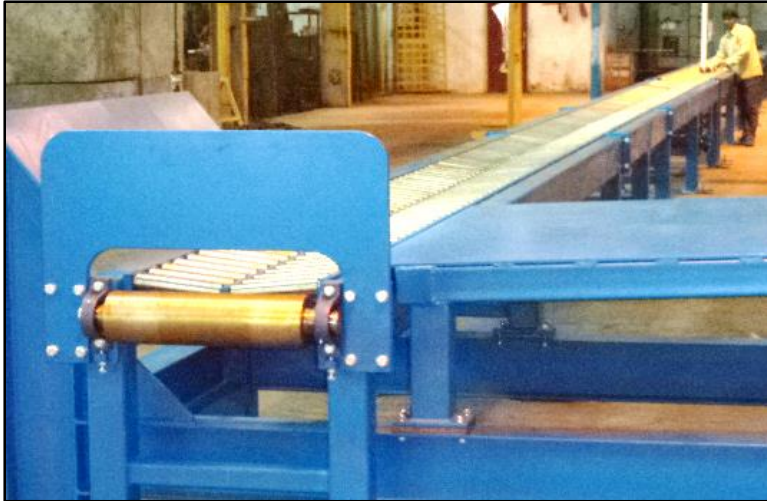
*Sales and Service, Bangalore*



ADF-Assembly



ADF-Fabrication

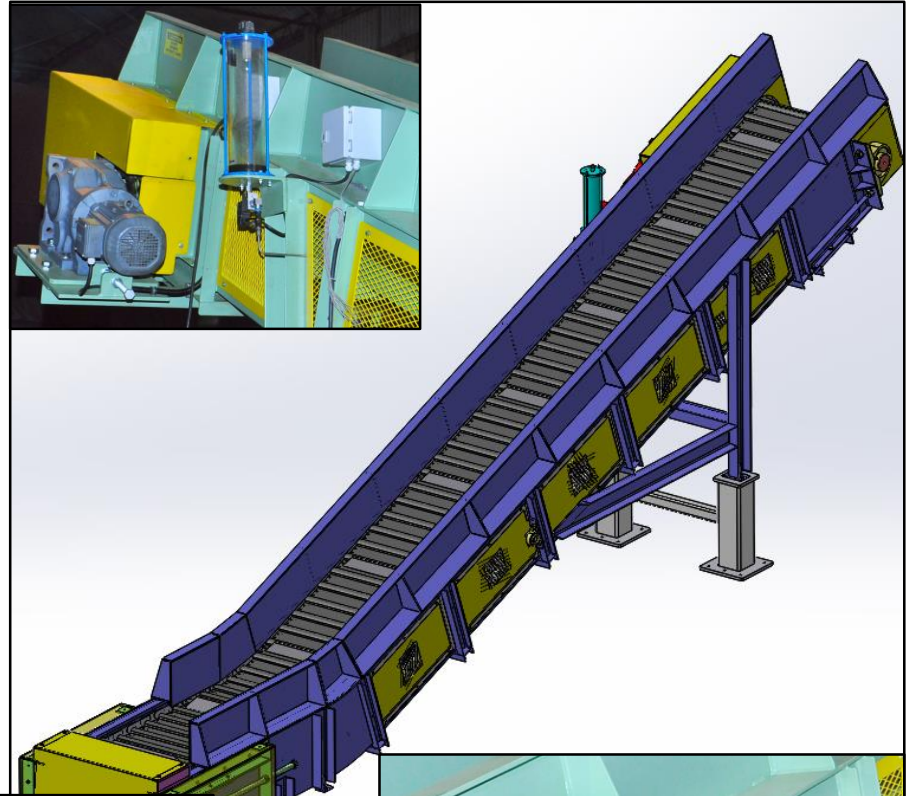
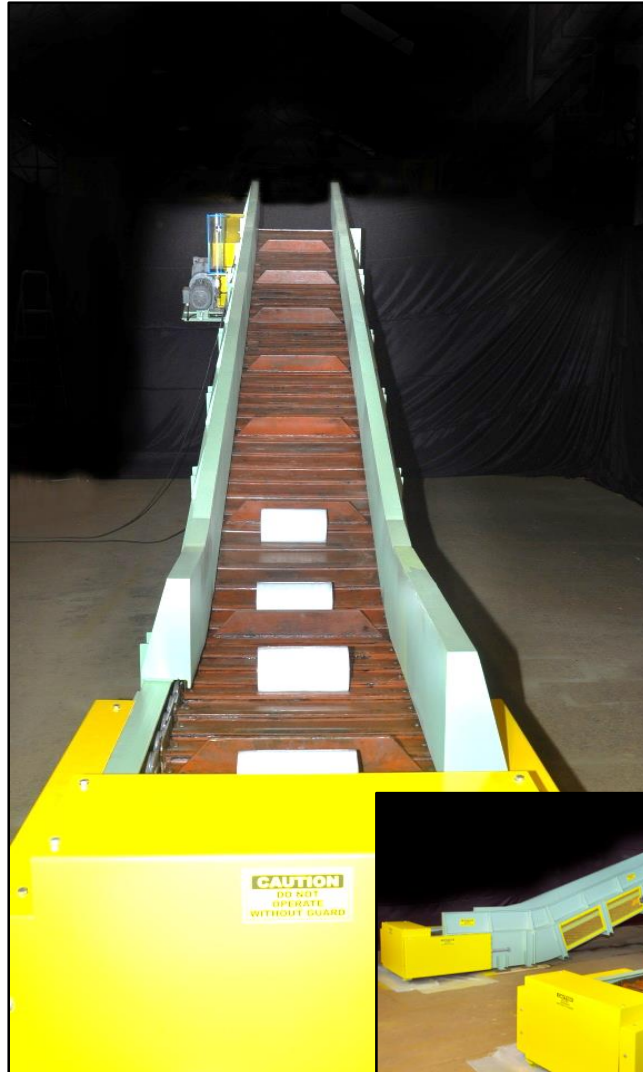




# Billet Offcut Carrying Apron Conveyor

Complete FAT at ADF

3D-Design





# Floor based handling automation various applications



Mezzanine Floor



Up enders / drop lifts



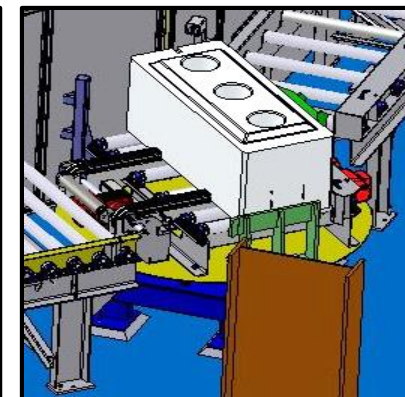
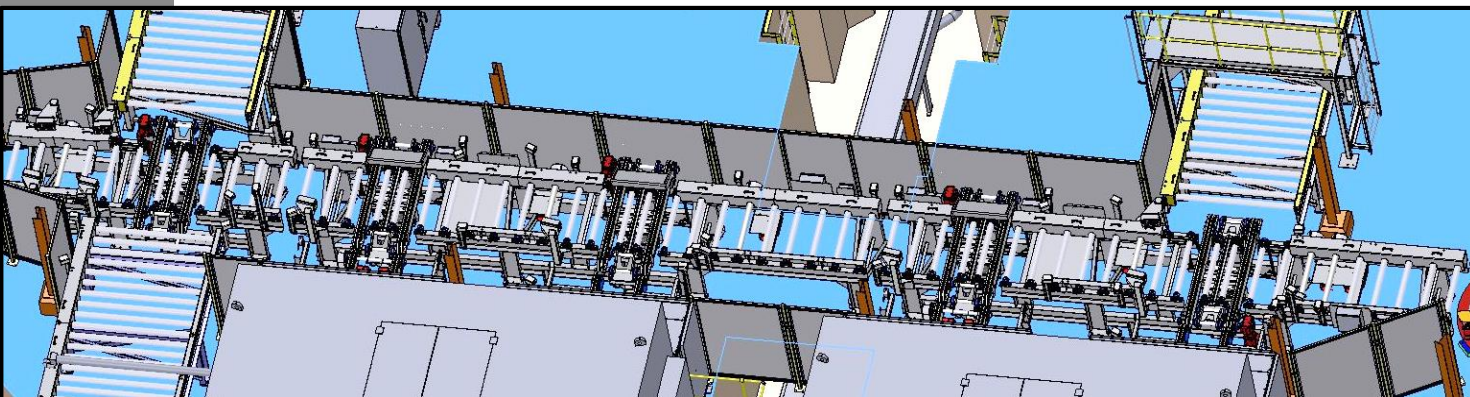
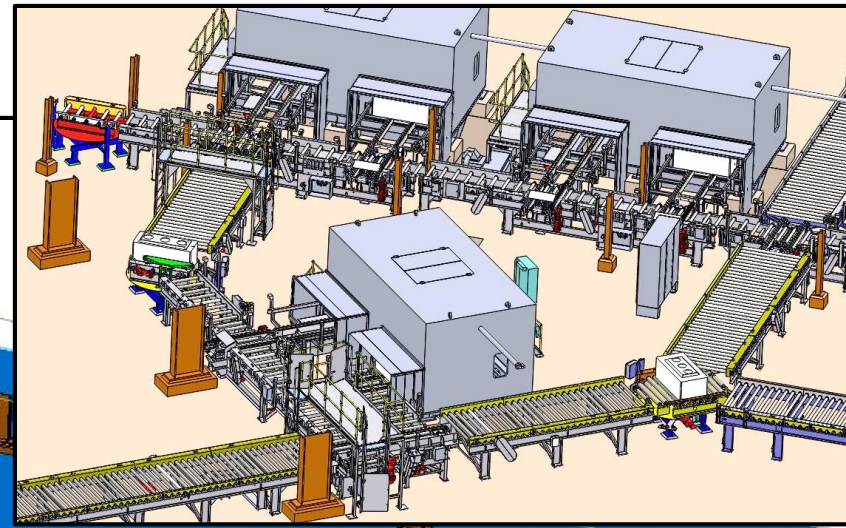
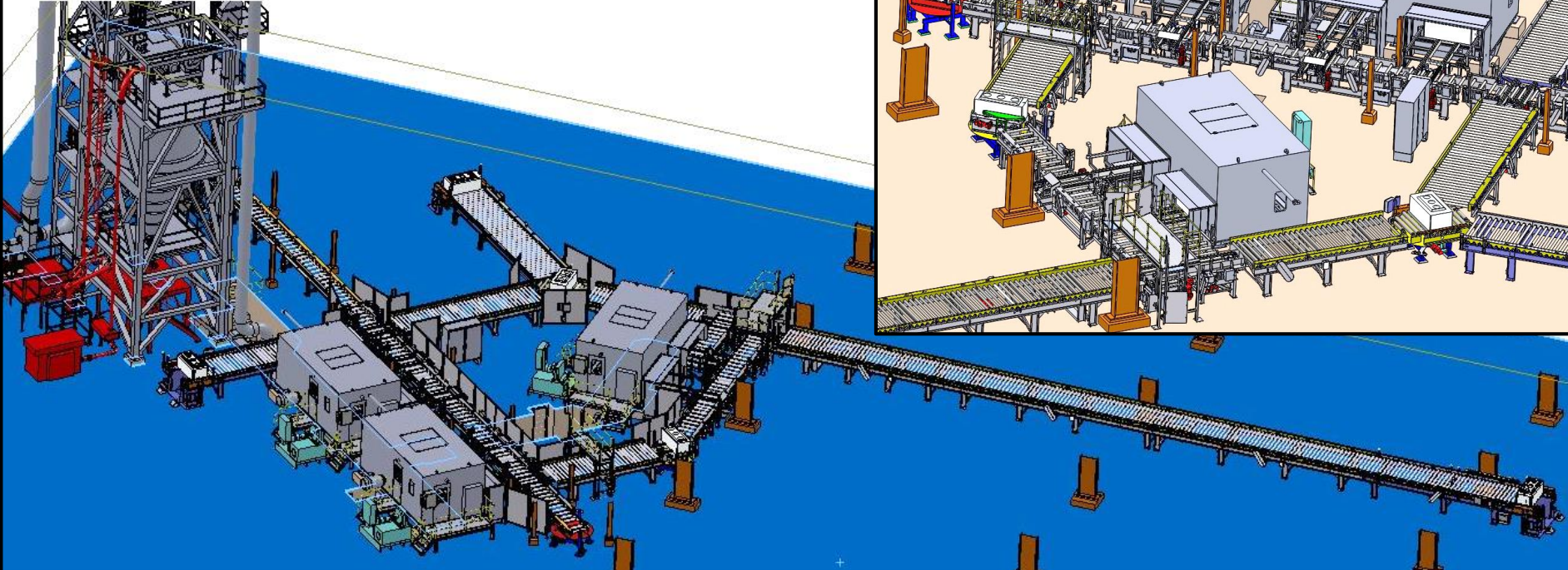
**FORGED WHEEL HANDLING SYSTEM**



# FORGED AXLE HANDLING SYSTEM



# Heavy matrl Handling System





# - Heavy unit Handling System









# STRUCTURAL PLATFORMS FOR VARIOUS APPLICATIONS











# CREDENTIAL PHOTOGRAPHS

**Melt Furnace Charging (CHTA)**



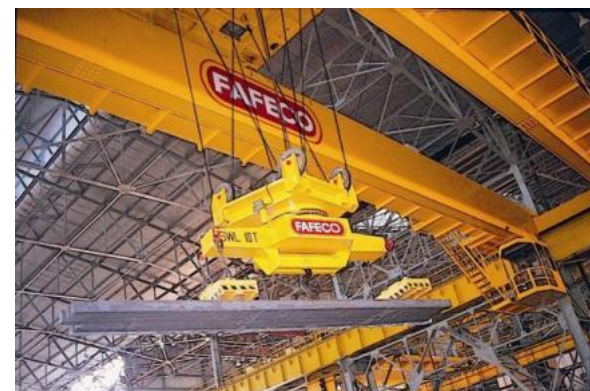
**Automatic Programmable Transducer Positioning Platforms**



**Stud Changer Crane**

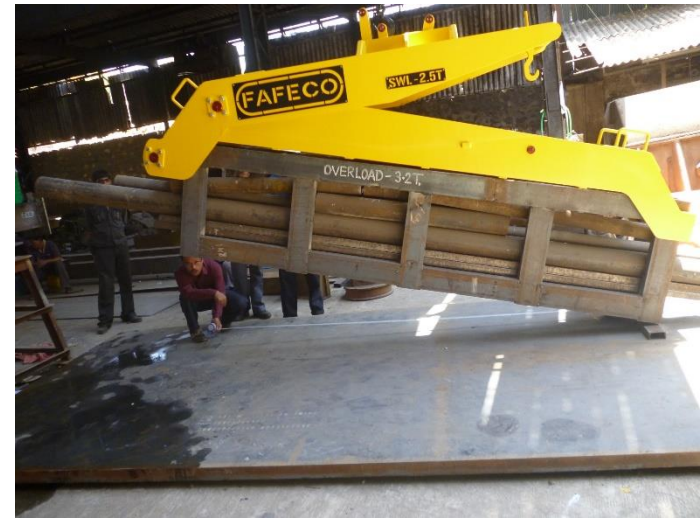


**Rotating Beam Anti-sway Magnet Crane**





# Various type of Lifting Tackles for heavy loads





# PARTIAL LIST OF CUSTOMERS

- Abitibi Consolidated Bowater
- Atlantic Packaging
- Appleton Coated
- Australian Paper
- Boise
- Cascades
- Domtar
- Georgia Pacific
- International Paper
- Irving Paper
- Irving tissue
- Kanzaki Specialty Papers
- Kimberly-Clark
- Kruger
- MeadWestvaco
- New Page
- Glatfelter
- Procter & Gamble
- Sappi
- Schweitzer-Mauduit
- Stora Enso North America
- Technocell GmbH
- Tembec
- UPM-Kymmene
- Wausau-Mosinee
- Weyerhaeuser
- Rio Tinto Alcan
- Alcoa
- Aleris
- Alexin
- Alouette Aluminium
- BHP Billiton
- Corus
- Easco Aluminium
- Emirates Aluminium
- Exal Aluminium
- Fata EPC
- Hindalco
- Hydro Aluminium
- Kaiser Aluminium
- Nalco (Fafeco)
- Noranda/ Norandal
- Qatalum
- Rio Tinto - IOC
- Sapa Industrial Extrusions
- Showa Denko Carbon
- SGL Carbon
- Teck Metals
- Vale
- Vedanta (Fafeco)
- Xstrata
- Many Other Indian Companies



**In continuation of our endeavors to provide the best Handling automation solutions for the industry we are an evolving group, committed to provide the Industry with A One Stop Solution for their varied handling requirements across the spectrum.**

**“ ADF ” group, a pioneer in EOT Cranes, Gantry Cranes and allied material handling equipment, is soon to announce one more step forward in providing additional state of the art equipments for our client to source from us.**

**THANK YOU !**

